

MX Series Addressable Modules

The MX Series Addressable Modules provide an interface between a wide range of fire alarm devices and MX Fire Alarm Panels. They can be programmed and tested with the MX Service Tool.

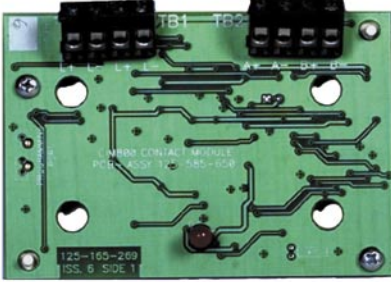
Features

- Communication and control/monitoring interface
- Compatible with MX Addressable Fire Alarm Panels
- High system integrity
- Supervision of control wiring
- Control of externally powered sounders
- Control of loop powered sounders
- Monitor external equipment (smoke dampers, etc)
- Reduced installation cost
- Removes the need for separate plant control circuits

General

An extensive range of ancillary modules has been specifically designed for use with the MX range of Control and Indicating Equipment (c.i.e.). The 800 range of ancillary modules provide the MX Fire Alarm Panels with a wide degree of systems application flexibility. This allows the addressable loop from the c.i.e. to both receive inputs to the system and control outputs from it. This extensive range of modules allows the scope of the fire detection system to be significantly expanded beyond a simple fire detector alarm system.

CIM800 Contact Input Module



The CIM800 Addressable Contact Input Module monitors and supervises 2 circuits of voltage-free contacts such as outputs from extinguishing systems, ventilation controls, fire door controls, sprinkler flow switches, non indicating hard contact detectors, etc. The LED illuminates when any input goes into alarm and can be programmed to blink when polled by the c.i.e. The CIM800 can be configured to monitor:

- Two circuits of multiple N/O contacts; with short circuit alarm.
- Two circuits of multiple N/C contacts; open circuit alarm.
- Two circuits with a single N/O contact closing for alarm; with short circuit fault. (Requires a resistor in series with the alarm contact and special c.i.e. programming).

The two circuits may be recognised as a single point or two separate points. Refer to the specific MX fire alarm panel specification.

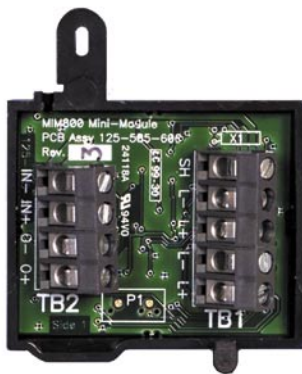
Technical Specification

Operating Voltage	20 to 40Vdc*
Quiescent Current	275µA (max.)
Alarm Current	2.8mA (max, LED on)
Circuit Resistance	10 Ohm (max.)
ELD Resistor	200 Ohm (supplied)
Alarm Resistor	100 Ohm (s/c fault)
Ambient Temp	-25 to +70°C
Relative Humidity	10% to 95% (non cond.)
CSIRO ActivFire Listed	afp-1446

Part Number CIM800

* MX addressable loop voltage

MIM800 Mini Input Module



The MIM800 Mini Input Module monitors a voltage-free contact and transmits its state to the c.i.e. It can be programmed to monitor either Normally Open (default) or Normally Closed contacts. The MIMs can be programmed to monitor:

- One circuit of multiple N/O contacts, with short circuit alarm.
- One circuit of multiple N/C contacts, with open circuit alarm.
- One circuit with a single N/O contact, closing for alarm, with fault detection for short circuit.

The MIM801 is also available; it is optimised for normally closed applications and can generate an interrupt (only used when a fast response is required) on an open circuit.

Technical Specification

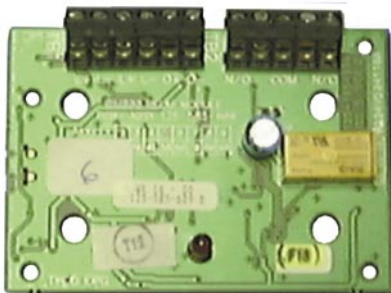
Operating Voltage	20 to 40Vdc*
Quiescent Current	275µA (typ)
Alarm Current	2.8mA (max, LED on)
Circuit Resistance	10 Ohm (max.)
ELD Resistor	200 Ohm (supplied)
Alarm Resistor	100 Ohm (s/c fault)
Ambient Temp	-25 to +70°C
Relative Humidity	10% to 95% (non cond.)
CSIRO ActivFire Listed	afp-1446

Part Numbers

MIM800	MIM800
MIM801	FP0837

* MX addressable loop voltage

RIM800 Relay Interface Module



The RIM800 Relay Interface Module provides one volt-free changeover contact which is not supervised. The relay is controlled by a command sent from the c.i.e. via the addressable loop and may be used to signal a state to other systems (security systems, for example) or to energise loads such as Door Holders. The relay operation is determined by the c.i.e. programming. The RIM800 has a red LED which may be configured to indicate relay activation and c.i.e. polling. Note that the RIM800 cannot be used to switch mains voltage directly.

Technical Specification

Operating Voltage	20 to 40Vdc*
Quiescent Current	285µA (max.)
Alarm Current	2.8mA (max, LED on)
Relay Contact	2A @ 30Vdc (max.)
Ambient Temp	-25 to +70°C
Relative Humidity	10% to 95% (non cond.)
CSIRO ActivFire Listed	afp-1446

Part Number RIM800

*MX addressable loop voltage

SNM800 Sounder Notification Module



The SNM800 Sounder Notification Module can be used to switch an external power source to sounders, extinguishing devices or other auxiliary equipment. The output is activated in response to a command from the c.i.e. The wiring to the controlled devices can be supervised for open and short circuit fault conditions and the external power source for the devices can be optionally supervised. Each output device (sounders etc) must have a suitable diode wired in series (if not already contained in the device) so that the whole line is supervised up to the End of Line Device (27K resistor).

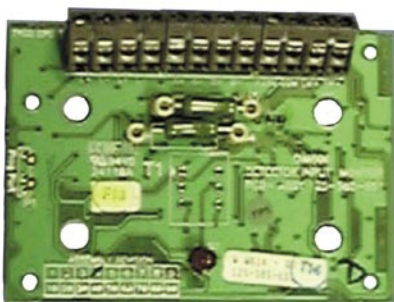
Technical Specification

Operating Voltage	20 to 40Vdc*
Quiescent Current	450µA (max.)
Alarm Current	3mA (max, LED on)
Output Current	2A @ 30Vdc (max.)
Output ELD	27K Ohm 0.5W
External 24V Supply	18 to 28Vdc
Ambient Temp	-25 to +70°C
Relative Humidity	10% to 95% (non cond.)
CSIRO ActivFire Listed	afp-1446

Part Number SNM800

* MX addressable loop voltage

DIM800 Detector Input Module



The DIM800 Detector Input Module interfaces two collective detector circuits onto the MX addressable loop.

Each circuit can support 3mA of detector quiescent current and requires a 4k7 Ohm End Of Line resistor. The two circuits may be recognised as a single point or two separate points. Refer to the specific MX fire alarm panel specification. Unused circuits must be terminated with an ELD.

The DIM800 requires a suitably rated external 24V supply to power the detector circuits.

Technical Specification

Operating Voltage ¹	20 to 40Vdc
Quiescent Current	100µA (max.)
Loop Alarm Current	170µA (max.)
Ambient Temp	-25 to +70°C
Relative Humidity	10% to 95% (non cond.)
Detector Load	3mA (max per input)
Detector ELD	4k7 Ohm
Output drop	1.5V@300mA
External Supply ²	20 to 28.7Vdc
Ext. Current/Circuit	7.5mA (normal)
Ext. Alarm Current ³	30 to 50mA
CSIRO ActivFire Listed	afp-1446
Part Number	DIM800

1..MX addressable loop voltage

2. Voltage restrictions for some detectors

3. External Supply Alarm / Short Circuit

CP820 Indoor Manual Call Point



The CP820 Manual Call Point has a plastic coated frangible element to ensure safe and reliable operation, producing no dangerous glass shards. It is operated by simply pressing on the centre of the frangible element until it snaps. A hammer, or other impact device, is not required. The snapped frangible element releases a microswitch, which signals an alarm at the c.i.e.. The integral LED indicator will illuminate when an alarm is registered and may be programmed to blink when the CP820 is polled by the c.i.e.

The CP820 may be fitted to a standard (surface mounting) call point back box which is available separately.

Technical Specification

Operating Voltage	20 to 40Vdc*
Quiescent Current	275µA (max.)
Alarm Current	2.8mA (max, LED on)
Ambient Temp	-25 to +70°C
Relative Humidity	10% to 95% (non cond.)
CSIRO ActivFire Listed	afp-1503
Indoor Applications Only	
Part Numbers	
MCP only	CP820
Backbox	SU0602

*MX addressable loop voltage

M520 Ancillary Cover



The MX range of Modules can be fitted to a double-gang back box using the M520 Ancillary Cover. Each MX module may be mounted in the M520 cover which is then fastened to a back box such as the K2 142. The M520 features access holes for programming and a hole positioned for the module LED.

Technical Specification

Length	148mm
Height	87mm
Depth	14mm
Weight	100g
Material	'Bayblend' PC/ABS
Colour	White
Part Number	M520

K2 142 Back Box



The K2 142 back box is a double-gang style mounting box that is compatible with the M520 Ancillary Cover. Used together, the M520 and K2 142 provide convenient mounting for an MX addressable module.

Technical Specification

Length	148mm
Height	87mm
Depth	30mm
Fixing Centres	120.6mm
Material	'Bayblend' PC/ABS
Colour	White
Part Number	K2 142

MX Loop Tester



The MX Loop Tester can be used to test, commission and fault-find a loop of MX analogue addressable detectors and ancillary devices, without having to connect the loop to a fire panel. Up to 250 MX devices may be connected. One Person Installation Mode allows new devices to be installed and field tested to confirm operation. Addressing Mode automatically sets the addresses of any un-programmed device that is added. Walk Test Mode provides a fast alarm response. A laptop (running a terminal program) connected to the unit can be used for operation, display and additional tests and commands.

Users outside Australia and New Zealand need to satisfy themselves that the mains adaptor meets local requirements.

Technical Specification

Power Source	24V batteries or 230VAC to 24V/3A plug pack
Dimensions (HWD) ¹	220x122x46mm
Dimensions (HWD) ²	250x250x70mm
Weight ³	2kg
Part Number⁴	FP0898

1. Unit only
2. Carry Bag
3. Excluding batteries
4. FP0898 includes test unit, carry bag, 230VAC plug pack, manual and loom.

801APK MX Service Tool Kit



The 801APK MX Service Tool Kit consists of

- 801AP MX Service Tool
- 4x AA NiMH rechargeable batteries
- 230VAC mains adaptor
- 12Vdc car adaptor
- Ancillary programming lead
- Spare contacts for the programming lead
- Shoulder strap
- Carry case.

The 801AP is used to program the address into MX addressable devices. It also displays information and performs tests on devices. It has a 32 character backlit LCD alphanumeric display, arranged in 2 rows of 16 characters and four 'softkeys', F1, F2, F3 and F4.

The 801AP has a finite life time after which the software must be recharged by an MX administrator.

Power for the 801AP is derived from 4 AA size NiMH rechargeable batteries. It may be run from an unregulated +12Vdc input ie, car cigarette lighter connection or 110/230VAC mains adaptor, both of which will recharge the batteries as well.

Users outside Australia and New Zealand need to satisfy themselves that the mains adaptor meets local requirements

Technical Specification

Batteries	4xAA NiMH
Batt. Operating Time	up to 15 hours
Ambient Temp	0 to +50°C
Relative Humidity	10% to 90% (non cond.)
Dimensions (HWD) ¹	48x200x112mm
Weight ¹	500g inc. batteries
Part Number	801APK

1. For 801AP unit only



WORMALD
"PROTECTING PEOPLE & PROPERTY"

Australia
tel: 133 166
www.wormald.com.au
firesafety.au@tycoint.com

New Zealand
tel: 0800 4 WORMALD
www.wormald.co.nz
wormald.questions.nz@tycoint.com