

---

### INSTALLATION INSTRUCTIONS

---

These instructions cover fitting and wiring of the two different brigade interface doors to the 4100U-S1 Fire Alarm System.

#### KIT CONTENTS

##### FP0935 FP,4100U-S1 1976-174,ASE DOOR KIT

- 1 x 4U hinged door, with ASE cover and barrel nuts already fitted
- 1 x 3 way connector and 1 x 2 way connector for connection to the ASE when it is fitted
- 1 x FP0740 FAS interface module with red, yellow, blue and white wires
- 1 x pair of red and black wires for connecting the ASE to the 4100U-S1 DC supply
- 4 x M6 screws, washers and cage nuts for mounting the door
- 5 x Cable ties and adhesive cable tie holders for fastening the ASE wiring
- 1 x green earth lead + nut and washers to earth the door to the expansion bay
- 2 x M4 x 16 screws and crinkle washers to mount the ASE to the door

##### FP0937 FP,4100U-S1 1976-174,PPU/AIU DOOR KIT

- 1 x 4U hinged door with spacer bracket, connector strip, label and wiring already fitted
- 4 x M6 screws, washers and cage nuts for mounting the door
- 5 x Cable ties and adhesive cable tie holders for fastening the ASE wiring
- 1 x green earth lead + nut and washers to earth the door to the expansion bay
- 4 x 1¼" PK screws and plastic spacers for mounting the PPU on the spacer bracket

#### DOOR MOUNTING

Both types of brigade doors mount in the 4 unit space at the bottom of the 4100U-S1 cabinet, using 4 x M6 screws, washers and cage nuts. Cage nuts should already be fitted to the 4100U-S1 and screws supplied with it, but there are spare screws, washers and cage nuts supplied with this kit in case the others have been lost.

#### GENERAL WIRING

The ASE or AIU/PPU should be powered from the fused DC distribution board on the power supply. It is recommended that the brigade device does not share its fuse protection with any other equipment, for reliability.

The wiring between the brigade device and the 4100U-S1 should be routed neatly as shown in the following drawings, and secured in place with the cable ties and adhesive tie holders supplied with the kits.

Fit the protective earth lead between the quick-connect tap on the brigade interface door and an unused stud in the lower right end of the expansion bay, using the nut and washers supplied with this kit.

#### AIU/PPU MOUNTING

The AIU or PPU must be obtained separately. The AIU is fastened directly to the spacer bracket on the brigade interface door by four screws supplied with the AIU. The PPU mounts on the spacer bracket using four screws and plastic standoffs supplied with this kit. See drawing 1901-267 sheet 2 on page 3 for details.

#### AIU/PPU WIRING

The pre-fitted wiring must be connected to the 4100U-S1's Alarm Relay terminals as shown in 1901-267 sheet 2 on page 3. Set the three links on the Alarm Relay card to the NO positions for an AIU and the NC positions for a PPU.

Note: the red wire has some extra length, for use in linking the terminals together as shown. Both AIU and PPU require extra wire links on the Alarm Relay terminals, and the PPU requires extra wire links on the connector strip on the door.

#### ASE MOUNTING

The ASE unit must be obtained separately. If it is supplied complete with a body, this must be removed before fitting the ASE to the door. The ASE is fastened to the brigade interface door with the two M4 screws and crinkle washers in the kit. The antenna socket should be fitted to the tab on the door below the ASE position. See drawing 1976-174 sheet 1 on page 4 and the ASE installation instructions for details.

#### ASE WIRING

The FP0740 ASE FAS module must be connected to the 4100U-S1's Alarm Relay terminals and the 2 way ASE connector as shown in 1976-174 sheet 1 on page 4. Set the three links on the Alarm Relay card to the NC positions.

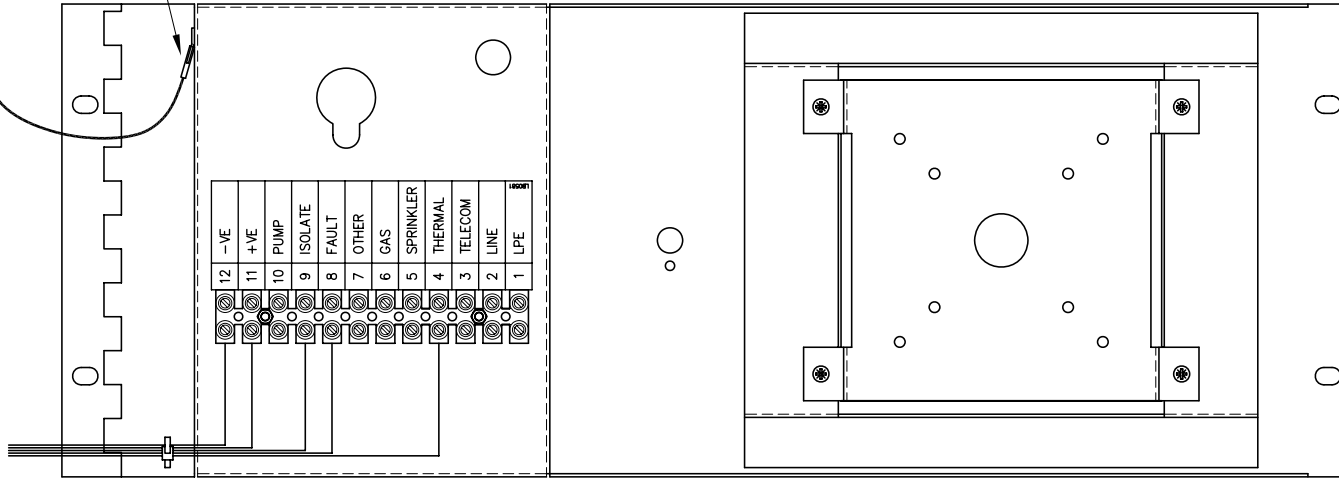
---

Manufactured by:	Tyco Safety Products 17 Mary Muller Drive, PO Box 19-545 Christchurch, New Zealand Tel +64-3-389 5096 Fax +64-3-389-5938	Distributed by:
------------------	--	--------------------

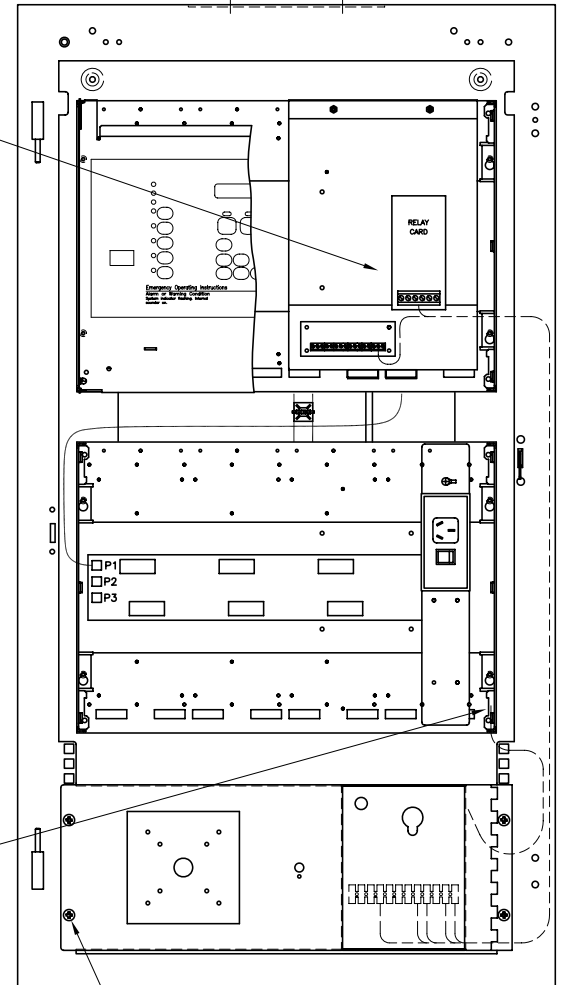
FIX M4 LUG END OF THE DOOR EARTH LOOM TO BAY 6/32 UNC STUD WITH 6/32 NUT AND M4 SHAKEPROOF WASHERS SUPPLIED.

FIT THE EARTH LOOM ON THE DOOR 4.8mm SPADE TERMINAL.

WIRE 4U AIU/PPU DOOR TO SPS BRD AND RELAY BRD AS PER DRAWING 1901-267 SHEET 2.



INSTALLATION WIRING



FIT 4U DOOR EARTH LOOM TO BAY 6/32 UNC STUD.

MOUNT AIU/PPU DOOR WITH  
4 OFF M6 X 12 SCREW, (SC0058)  
4 OFF FLAT M6 WASHER, (WA0008)  
4 OFF M6 CAGE NUT, (NT0030).

CABINET INSTALLATION

NOTES:

1. REFER TO LITERATURE LT0316 (DRAWING 1901-267 SHEET 2) FOR MORE WIRING DETAILS.

CONFIDENTIAL: THIS DOCUMENT MUST NOT BE COPIED NOR THE CONTENTS PASSED ON TO ANY THIRD PARTY WITHOUT THE CONSENT OF THE COMPANY.

UNLESS OTHERWISE STATED: ALL DIMENSIONS IN MILLIMETRES. DO NOT SCALE. TOLERANCES ARE TO BE: 1 DECIMAL PLACE ±0.5, 2 DECIMAL PLACES ±0.3, 3 DECIMAL PLACES ±0.1

3rd ANGLE PROJECTION

ISS/REV	AMENDMENTS	ECO	DRN	CHKD	AUTH	APVD	DATE
A	ORIGINAL	-	KJS	LSC	RC	DP	21-12-05



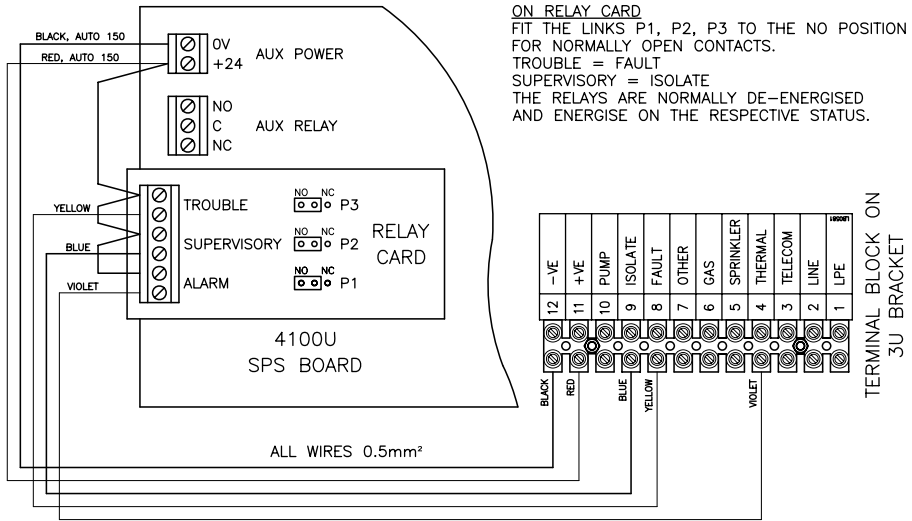
TYCO SAFETY PRODUCTS  
17 MARY MULLER DRIVE  
P.O. BOX 19545  
CHRISTCHURCH, PH: +64 3 3895096  
NEW ZEALAND. FAX: +64 3 3895938

**4100U-S1  
AIU/PPU 4U DOOR  
WIRING DETAILS**

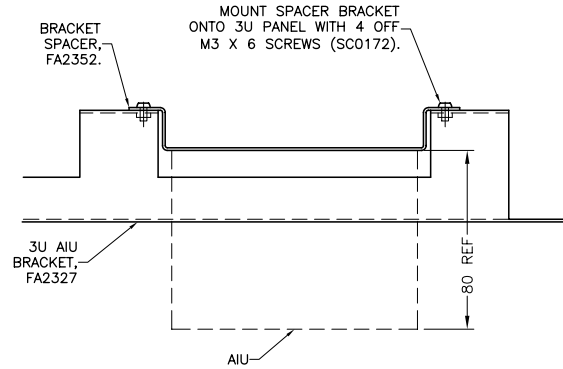
---

DRAWING No: **1976-174** SHEET **3** of **4**

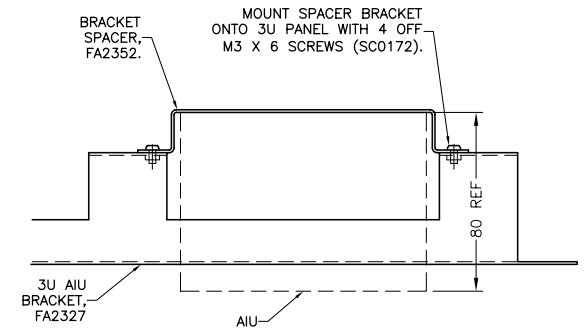
<b>A3</b>	ISS/REV <b>A</b>	PART No: <b>FP0937</b>
-----------	------------------	------------------------



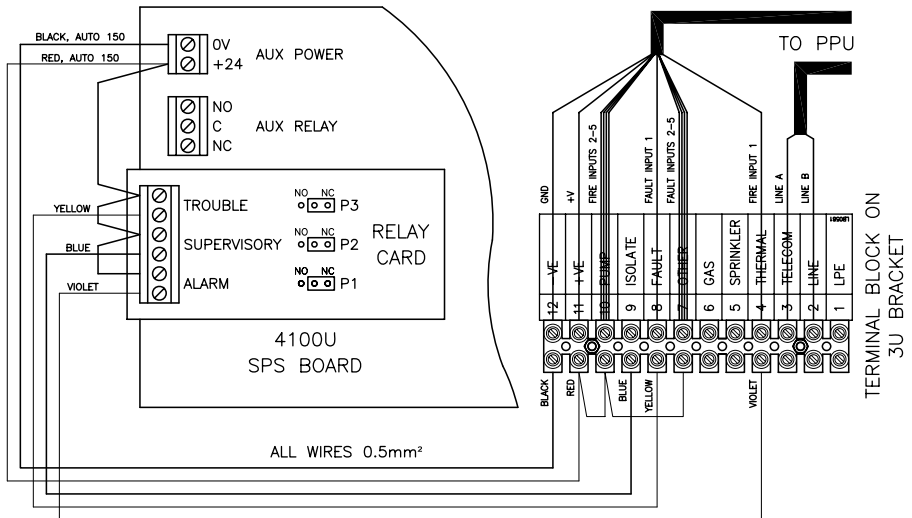
WESTERN AUSTRALIA AIU WIRING



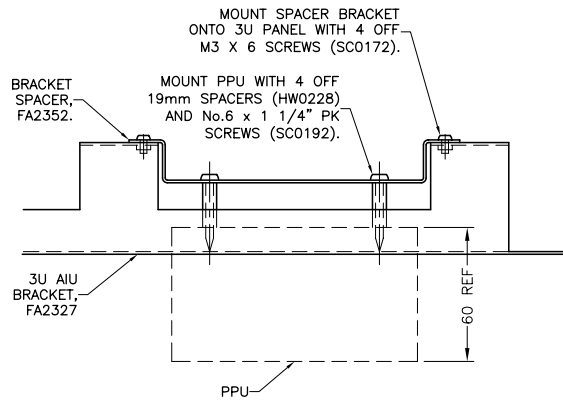
AIU BRACKET ASSEMBLY FOR 18U, 28U AND 40U RACK CABINETS



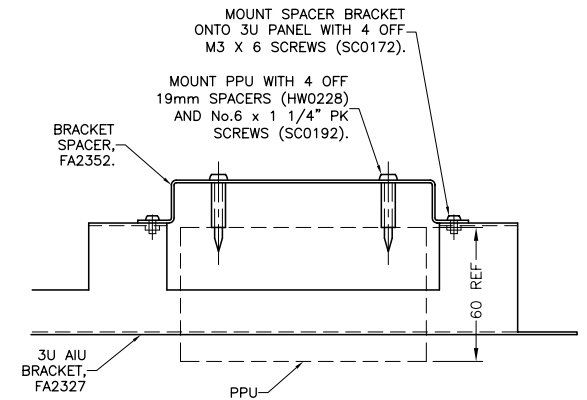
AIU BRACKET ASSEMBLY FOR 15U AND 21U RACK CABINETS



QUEENSLAND PPU WIRING



PPU BRACKET ASSEMBLY FOR 18U, 28U AND 40U RACK CABINETS



PPU BRACKET ASSEMBLY FOR 15U AND 21U RACK CABINETS

CONFIDENTIAL: THIS DOCUMENT MUST NOT BE COPIED NOR THE CONTENTS PASSED ON TO ANY THIRD PARTY WITHOUT THE CONSENT OF THE COMPANY.

UNLESS OTHERWISE STATED: ALL DIMENSIONS IN MILLIMETRES. DO NOT SCALE. TOLERANCES ARE TO BE: 1 DECIMAL PLACE ±0.5, 2 DECIMAL PLACES ±0.3, 3 DECIMAL PLACES ±0.1

3rd ANGLE PROJECTION

ON RELAY CARD  
FIT THE LINKS P1, P2, P3 TO THE NC POSITION FOR NORMALLY CLOSED CONTACTS.  
TROUBLE = FAULT  
SUPERVISORY = ISOLATE  
THE RELAYS ARE NORMALLY DE-ENERGISED AND ENERGISE ON THE RESPECTIVE STATUS.

ISS/REV	AMENDMENTS	ECO	DRN	CHKD	AUTH	APVD	DATE
A	ORIGINAL	3566	KJS	DG	LSC	DVS	20-7-04

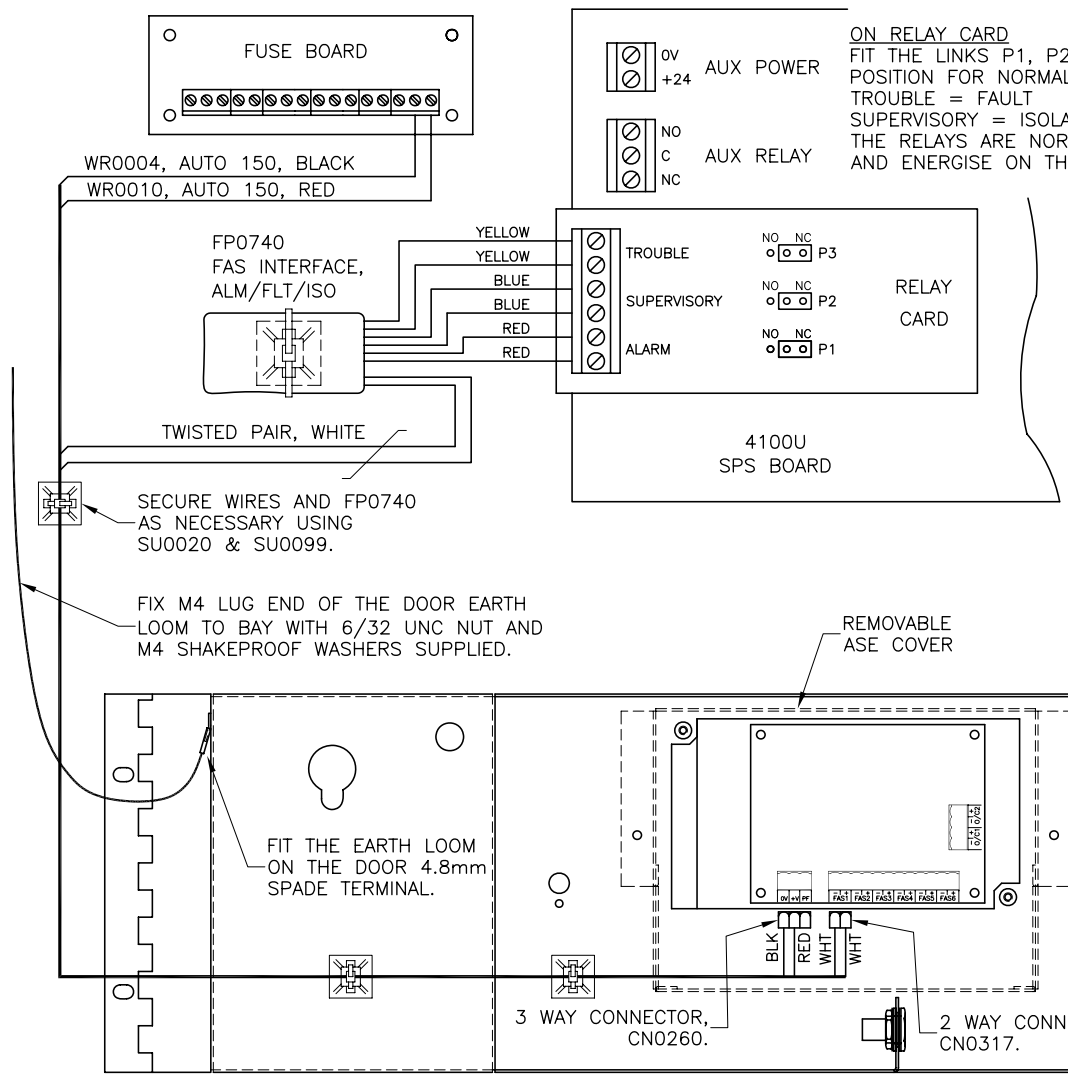
**tyco** / Safety Products

TYCO SAFETY PRODUCTS  
17 MARY MULLER DRIVE  
P.O. BOX 19545  
CHRISTCHURCH, PH: +64 3 3895096  
NEW ZEALAND. FAX: +64 3 3895938

4100U  
AIU/PPU TO SPS WIRING  
LITERATURE MASTER

DRAWING No: 1901-267 SHEET 2 of 2

A2	ISS/REV	A	PART No:	LT0316
----	---------	---	----------	--------



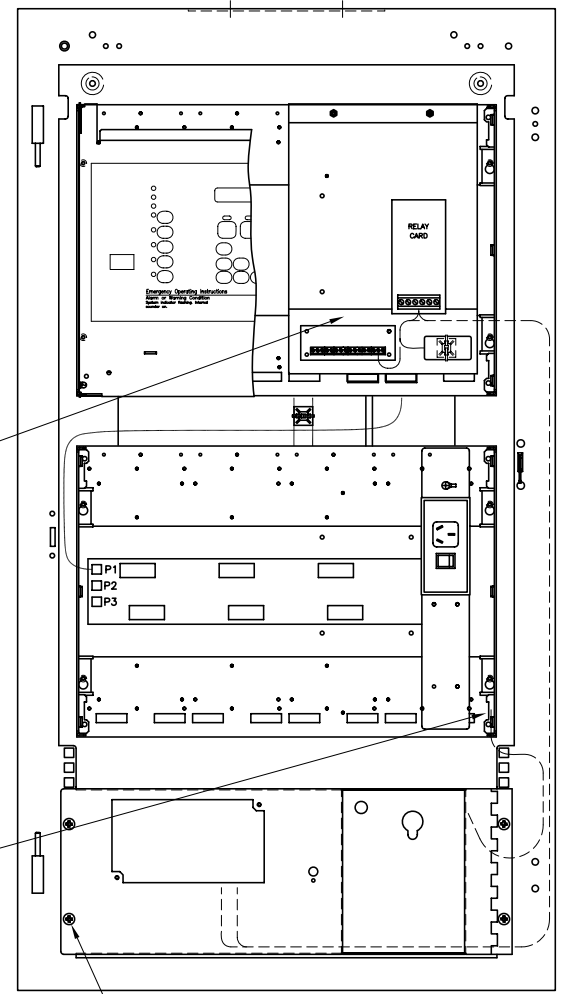
ON RELAY CARD  
 FIT THE LINKS P1, P2, P3 TO THE NC POSITION FOR NORMALLY CLOSED CONTACTS.  
 TROUBLE = FAULT  
 SUPERVISORY = ISOLATE  
 THE RELAYS ARE NORMALLY DE-ENERGISED AND ENERGISE ON THE RESPECTIVE STATUS.

SECURE WIRES AND FP0740 AS NECESSARY USING SU0020 & SU0099.

FIX M4 LUG END OF THE DOOR EARTH LOOM TO BAY WITH 6/32 UNC NUT AND M4 SHAKEPROOF WASHERS SUPPLIED.

FIT THE EARTH LOOM ON THE DOOR 4.8mm SPADE TERMINAL.

**INSTALLATION WIRING**



WIRE 4U ASE/MIC DOOR AND FAS INTERFACE TO SPS BRD AND RELAY BRD AS SHOWN.

FIT 4U DOOR EARTH LOOM TO BAY 6/32 UNC STUD.

MOUNT ASE/MIC DOOR WITH  
 4 OFF M6 X 12 SCREW, (SC0058)  
 4 OFF FLAT M6 WASHER, (WA0008)  
 4 OFF M6 CAGE NUT, (NT0030).

**CABINET INSTALLATION**

CONFIDENTIAL: THIS DOCUMENT MUST NOT BE COPIED NOR THE CONTENTS PASSED ON TO ANY THIRD PARTY WITHOUT THE CONSENT OF THE COMPANY.

UNLESS OTHERWISE STATED: ALL DIMENSIONS IN MILLIMETRES. DO NOT SCALE. TOLERANCES ARE TO BE: 1 DECIMAL PLACE ±0.5, 2 DECIMAL PLACES ±0.3, 3 DECIMAL PLACES ±0.1

3rd ANGLE PROJECTION

ISS/REV	AMENDMENTS	ECO	DRN	CHKD	AUTH	APVD	DATE
A	ORIGINAL	-	KJS	LSC	RC	DP	21-12-05



TYCO SAFETY PRODUCTS  
 17 MARY MULLER DRIVE  
 P.O. BOX 19545  
 CHRISTCHURCH, PH: +64 3 3895096  
 NEW ZEALAND. FAX: +64 3 3895938

**4100U-S1  
 FAS INTERFACE ALM/FLT/ISO  
 WIRING DETAILS**

DRAWING No: **1976-174** SHEET **1** of **4**

<b>A3</b>	ISS/REV <b>A</b>	PART No: <b>FP0935</b>
-----------	------------------	------------------------