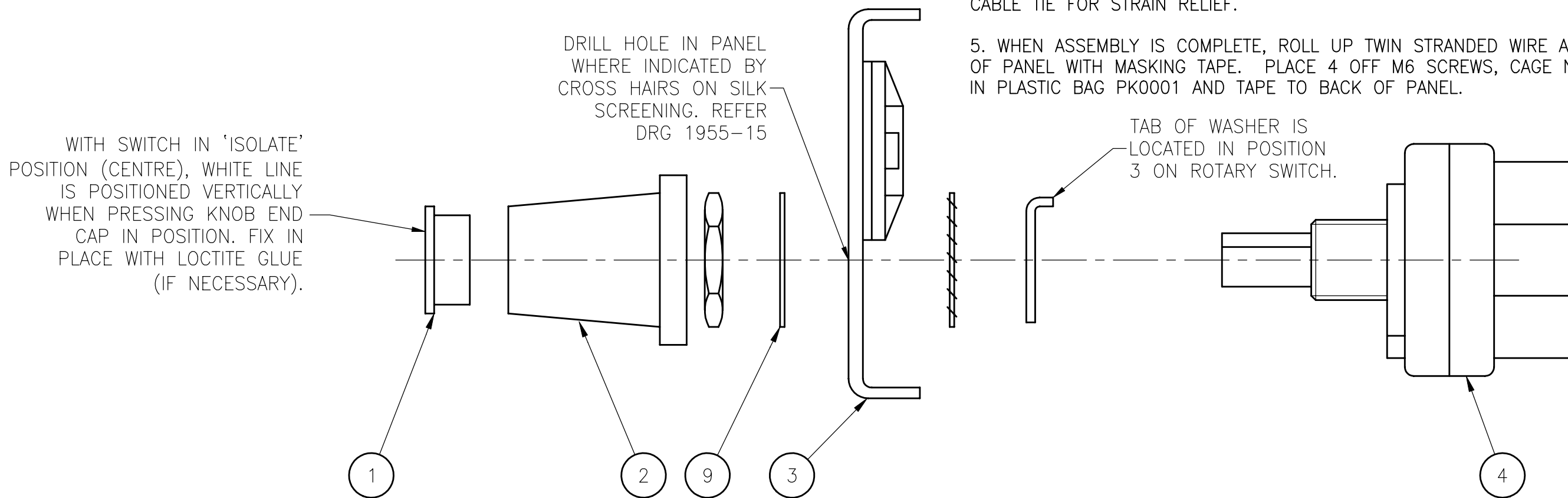


SWITCH WIRING DETAIL

ITEM	PART NO.	QTY.	DESC.
1	SW0132	1	SWITCH, END CAP, FOR KNOB, GREEN
2	SW0143	1	SWITCH, KNOB, PUSH FIT
3	FA1951	1	FAB, 1955-18,T-GEN, 1U CTRL PANEL, (S)
4	FA1307	1	SWITCH, ROTARY, 4P3T, BBM, 1/4", PRECUT
5	RR0045	1	RESISTOR, 0.4W,5%, D2.5, P10, SFR25, 10K
6	WR0110	2.0	WIRE, HOOKUP, 0.2 SQmm, TWIN STRANDED
7	SU0020	1	SUNDRY, CABLE TIE, 3.62 IN
8	SU0099	1	SUNDRY, CABLE TIE HOLDER, ADHESIVE.
9	WA0034	1	WASHER, SHIM, 3/8" X 5/8"OD, BRIGHT

ASSEMBLY NOTES:

1. DRILL HOLE IN 1U PANEL AS PER DRAWING 1955-15.
2. SOLDER RESISTOR & WIRES TO SWITCH TERMINALS.
3. FIX ADHESIVE CABLE TIE HOLDER WITH LOCTITE GLUE ON RHS OF SWITCH (AS VIEWED FROM FRONT).
4. FIX STRANDED WIRE TO CABLE TIE HOLDER ON BACK OF THE PANEL WITH 1 OFF CABLE TIE FOR STRAIN RELIEF.
5. WHEN ASSEMBLY IS COMPLETE, ROLL UP TWIN STRANDED WIRE AND TAPE TO BACK OF PANEL WITH MASKING TAPE. PLACE 4 OFF M6 SCREWS, CAGE NUTS AND WASHERS IN PLASTIC BAG PK0001 AND TAPE TO BACK OF PANEL.



EXPLODED SECTION THRU' ASSEMBLY

UNLESS OTHERWISE STATED: ALL DIMENSIONS IN MILLIMETRES. DO NOT SCALE. TOLERANCES ARE TO BE: 1 DECIMAL PLACE ±0.5, 2 DECIMAL PLACES ±0.3, 3 DECIMAL PLACES ±0.1

CONFIDENTIAL: THIS DOCUMENT MUST NOT BE COPIED NOR THE CONTENTS PASSED ON TO ANY THIRD PARTY WITHOUT THE CONSENT OF THE COMPANY.

ISS/REV	AMENDMENTS	ECO	DRN	CHKD	AUTH	APVD	DATE
A	ORIGINAL	-	KJS	HW	RAC	DSP	29-7-96
B	IT.1 WAS SW0129. IT.4 WAS SW0128. SWITCH MODS DELETED.	2599	GEL	LM	TWH	DSP	9-4-97
C	FA1307 WAS DRAWN AS 3P3T	2618	GEL				9-5-97

T-GEN 50  
1U CONTROL PANEL  
ASSEMBLY DRAWING

**VIGILANT**  
FIRE & EVACUATION SYSTEMS

211 MACES ROAD, CHRISTCHURCH 8006, NZ  
P.O. BOX 19-545, CHRISTCHURCH 8030, NZ

SIZE	DRAWING NUMBER	SHEET NUMBER	ISS/REV	PART NUMBER
A3	1955-16	1 of 1	C	ME0289

C.A.D.

3rd ANGLE