

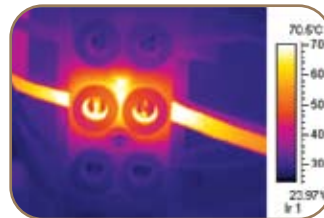
S160

- ▶ High level of thermal sensitivity
- ▶ Ergonomic design, robust & easy to use
- ▶ Full radiometric measurement up to 250° C
- ▶ Records up to 1000 images!
- ▶ Unique tilting 2.5" LCD screen for easy inspection in any direction plus TFT screen for dual information
- ▶ Point and shoot format

The S160's thermal sensitivity of 0.1°C, gives you the superior imaging and measuring capabilities required when measuring small objects or objects at a distance.

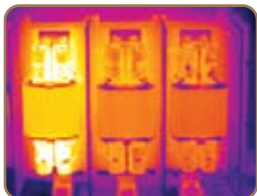
Easy to use and measuring temperatures of up to 250°C, this camera provides convenient and efficient, interruption free usability and adaptability across any number of applications: from simple electrical systems inspection to professional thermography.

The additional functionality of the dual display means you can easily check temperatures without even opening the high resolution 2.5" colour LCD screen.



Shown with optional narrow view lens

Applications



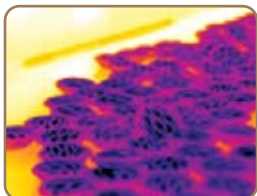
Professional Thermography

With its thermal sensitivity the S160 is able to handle just about any situation, making it an ideal choice for professional thermographers who work in a range of industries including electrical, mechanical, pipework & insulation.



Power & Utilities

The S160 is a perfect camera for use in power generation and utilities applications. With its high level of thermal sensitivity you can use this camera with confidence when looking at small components at a distance.



Process Control

With USB outputs the S160 can be remotely controlled for process control applications.



Building Inspection

The S160's impressive level of resolution and thermal sensitivity, makes it an economical choice when looking to detect small temperature variations over large areas.

Specifications

Detector type	Uncooled FPA microbolometer
Resolution	160 x 120 focal plane array
Thermal Sensitivity	≤ 100mk at 30°C
Frame Rate	50Hz - 60Hz (video rate)
Electronic Zoom	None
Display	2.5" high resolution colour LCD screen
On Screen Indicators	Movable centre point
Storage	Store up to 1000 images
Temperature Range	-20° C to 250° C
Accuracy	± 2° C or ± 2% of reading
Field of View	20° x 15°
Battery Operating Time	2 hours continuous operation
Interfaces	USB & Video
Weight	700g including battery & std lens
Size	211 mm x 80mm x 195mm
Colour Palettes	5 Palettes (incl rainbow, iron, B&W etc)
Software	SAT Report 2005
Warranty	12 months

www.ipi-infrared.com

AUSTRALIA FREECALL: 1300 781 701

INTERNATIONAL PHONE: +61 3 9872 5055

Unit 15, 634-644 Mitcham Road, Mitcham, VIC, Australia

IPi INDUSTRIAL
PRECISION
INSTRUMENTS