

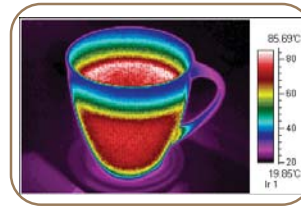
S80 Hotfind

- ▶ Ergonomic design, robust & easy to use
- ▶ Full radiometric measurement
- ▶ Records up to 1000 images!
- ▶ Unique tilting 2.5" screen for easy inspection in any direction
- ▶ Small minimum focus distance of 10cm
- ▶ Versatile fast USB connectivity

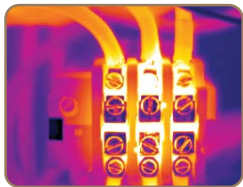
Easy to use and extremely affordable, the S80 Hotfind delivers crisp thermal imaging and precise measurement.

With 2.5 hours of battery operation time, power save mode, a large image storage capacity and a "point & shoot" functionality, this camera provides convenient and efficient, interruption free usability in industrial applications.

The minimum focus distance of 10cm enables imaging of even the smallest of components, providing more detail in your images and accurate temperature measurements which is particularly important in inspections of electrical applications.

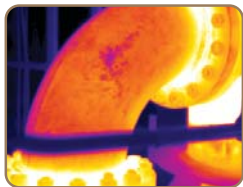


Applications



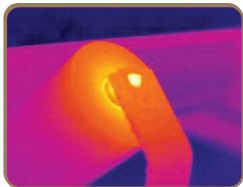
Electrical Systems Inspection

Electrical faults or potential problems are easy to detect using infrared to identify heat anomalies, helping you reduce downtime, prevent costly failures and saving time and money.



Pipework & Insulation

The S80 Hotfind allows you to detect wear and tear in pipework and insulation without using destructive testing! Use the S80 Hotfind to find hot and cold spots, enabling you to fix the problem before it occurs.



Mechanical Systems Inspection

Potential mechanical faults can be easily detected with infrared, and with a video rate refresh rate, the S80 Hotfind can accurately capture images and temperatures, even when the object is moving or rotating.



Building Inspection

The S80 Hotfind's impressive level of resolution and thermal sensitivity, makes it an economical choice when looking to detect small temperature variations over large areas.

Specifications

Detector type	Uncooled FPA microbolometer
Resolution	160 x 120 focal plane array
Thermal Sensitivity	≤ 120mk at 30°C
Frame Rate	15Hz
Electronic Zoom	None
Display	2.5" high resolution colour LCD screen
On Screen Indicators	Movable centre point
Storage	Store up to 1000 images
Temperature Range	-20° C to 50° C
Accuracy	± 2° C or ± 2% of reading
Field of View	20° x 15°
Battery Operating Time	2 hours continuous operation
Interfaces	USB & Video RS170
Weight	700g including battery & std lens
Size	211 mm x 80mm x 195mm
Colour Palettes	5 Palettes (incl rainbow, iron, B&W etc)
Software	SAT Report 2005
Warranty	12 months

www.ipi-infrared.com

AUSTRALIA FREECALL: 1300 781 701

INTERNATIONAL PHONE: +61 3 9872 5055

Unit 15, 634-644 Mitcham Road, Mitcham, VIC, Australia

IPI INDUSTRIAL
PRECISION
INSTRUMENTS