

ThermoPro TP8

- ▶ Next generation high performance detector
- ▶ High thermal sensitivity & precise measurement
- ▶ Intelligent on-board image analysis
- ▶ Real time radiometric recording and image storage
- ▶ Large 3.5" screen PLUS viewfinder (640 x 480)
- ▶ Blue tooth voice recording & voice recognition
- ▶ Intuitive touch screen control

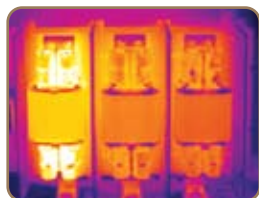
With a powerful 384 x 288 resolution, the ThermoPro TP8 gives crisp thermal and visual imaging, and is packed with a wide range of sophisticated features.

These features include a 640x 480 resolution large screen and viewfinder ensuring quick and easy imaging, auto voice recognition for handsfree operation, automatic correction features accounting for distance and atmospheric conditions as well as a blue tooth headset providing wireless audio recording and playback.

With its intelligent, easy to use software the TP8 really is on the cutting edge of professional infrared.



Applications



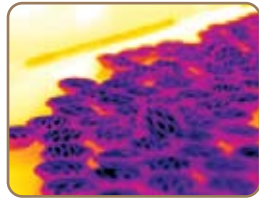
Professional Thermography

With its high resolution and wide range of features, the TP8 is able to handle just about any situation, making it an ideal choice for professional thermographers who work in a range of industries including electrical, mechanical, pipework & insulation.



Power & Utilities

The high level of thermal sensitivity and superior resolution in the TP8 make it a perfect camera for use in power generation and utilities applications. You can use this camera with confidence when looking at small components at a distance.



Process Control

With RS232 or USB outputs the TP8 can be remotely controlled for process control applications.



Building Inspection

The ThermoPro TP8's impressive level of resolution and thermal sensitivity, makes it an economical choice when looking to detect small temperature variations over large areas.

Specifications

Detector type	<i>Uncooled FPA microbolometer</i>
Resolution	<i>384 X 288 focal plane array</i>
Thermal Sensitivity	<i>≤ 60 mk at 30°C (frame averaging)</i>
Frame Rate	<i>Video rate 50Hz</i>
Electronic Zoom	<i>x 1 to x 8 continuous zoom</i>
Display	<i>3.5" high resolution colour LCD screen</i>
Visual Image	<i>1280 x 1024 pixels (1.3 megapixels)</i>
On Screen Indicators	<i>Hot spot & centre point</i>
Storage	<i>2GB on SD card, 1GB on board</i>
Temperature Range	<i>-20° C to 800° C (up to 2000° C optional)</i>
Accuracy	<i>± 1° C or ± 1% of reading</i>
Field of View	<i>22° x 16°</i>
Battery Operating Time	<i>Over 2.5 hours continuous operation</i>
Interfaces	<i>USB 2.0, RS232, Audio & Video</i>
Weight	<i>1.1 kg including battery</i>
Size	<i>186mm x 106mm x 83mm (std model)</i>
Colour Palettes	<i>8 Palettes (incl rainbow, iron, B&W etc)</i>
Software	<i>IR Analyser</i>
Warranty	<i>12 months</i>

www.ipi-infrared.com

AUSTRALIA FREECALL: 1300 781 701

INTERNATIONAL PHONE: +61 3 9872 5055

Unit 15, 634-644 Mitcham Road, Mitcham, VIC, Australia

IPi INDUSTRIAL
PRECISION
INSTRUMENTS